



Company Profile

We have established ourselves as a premium quality provide of housewares since 1978. The USA Distribution Center opened in Bellevue, Washington in 1998 to better serve a timely delivery of our goods all over the country.

There are over 3,000 products available. Our services include producing OEM, ODM, or proprietary products for the customers.

The factory can handle material such as: ABS, Polypropylene, Polycarbonate, Nylon, Acrylic, Santoprene, Silicone, Stainless Steel, Wood and Bamboo with our extensive line of machines.

We use fully automatic plastic injection machines, insert molding/double injection machines, high impact bonding machines for cookware, ultrasonic welding, liquid silicone injection machines and non-stick coating spray line.

With the use of the latest equipment like laser welding, you can see the results in our products. Strict quality control ensures the product you received are consistently good.

The production area is over one million square feet with 2,800 employees. We follow international guideline for fair labor practice/wages and offer housing for our employees.

Please visit our web site at www.miufrance.com to see new products that are regularly added.





11.50" Long Handle
5" Diameter Head

90020

NEW

Commercial Mesh Skimmer
w/ hook handle
Stainless Steel
List \$20

MIU Commercial Series Cookware - Stay Cool Handle

MIU commercial cookware is composed of 18/10 brush stainless steel interior along with a 5mm aluminum disk for conductivity and encapsulated with 0.5mm high impact bonded bottom for induction cooktop. Each piece is fitted with a stay cool stainless steel tube handle mounted to the body with six precision spot weld. The fry pans are arc shaped for easy pouring. The body has a mirror finished and fitted with a rolled edge for additional strength. Whitford Eclipse non-stick surface give years of carefree service.



95037
8" Open Fry pan
List \$40



95038
10" Open Fry pan
List \$50



95039
12" Open Fry pan
List \$70



95030
1.5qt Sauce Pan
List \$40



95031
2.4qt Sauce Pan
List \$60



95032
3.0qt Sauce Pan
List \$80



95033
3.5qt Chefs Pan
List \$70



95034
5.5qt SS IHIBB saute
List \$120

95040
13 Piece Commercial
Stay-Cool Handle Cookware

10" Non-Stick Open Skillets
12" Non-Stick Open Skillets
1.5 qt Covered Saucepan
2.4 qt Covered Saucepan
5.0 qt Covered Saucepan
w/Steamer Insert
5.5 qt Covered Saute
8.0 qt Covered Stockpot

List \$600



LA CUISINE COOKWARE

5-PLY CLAD 10 PIECE SET



- 8" non-stick fry pan
- 10" non-stick fry pan
- 2 qt. sauce pan w/lid
- 3 qt. sauce pan w/lid
- 3 qt. saute pan w/lid
- 6 qt. stock pot w/lid

95077
5 ply clad, 10 pc set
List \$800

Originally designed for professional chefs, each pan has 5 layers, bonded together to ensure even heating. The pure aluminum core is fused with two aluminum alloy layer and sandwich between the durable magnetic stainless steel exterior and the hand polished 18/10 stainless steel cooking surface, which won't react with food. Non-stick fry pans features a professional grade Eclipse© non-stick surface that cleans up quickly. Long, stay-cool handles have non corrosive rivets secured to the body. Tight fitting stainless steel lids. Ideal for electric, gas, halogen, and induction cooktops.

COPPER CORE 10 PIECE SET



- 8" non-stick fry pan
- 10" non-stick fry pan
- 2 qt. sauce pan w/lid
- 3 qt. sauce pan w/lid
- 3 qt. saute pan w/lid
- 8 qt. stock pot w/lid

95075
Copper core, 10 pc set
List \$800

Features an 18/10 stainless body. Encapsulated core, consisting of a layer of pure copper surrounded by aluminum, guarantees even cooking with no hot spots. Fry pans features a professional grade Eclipse© nonstick surface that cleans up quickly. Long stay cool handles have non-corrosive rivets secured to the body. Tight fitting stainless steel lids. Ideal for electric, gas, halogen and induction cooktops.



95024
Aluminum 4 cup egg poacher
List \$70



95009
Aluminum fry pan set of 3
8", 10", 12" - non stick
List \$100



10005
12" Diameter SS
Universal Fry Pan Cover
List \$30



95042
3qt Universal Steamer
List \$40



3601
Stainless Steel
Pour Off Sieve 12"
List \$20

Stainless Steel Colanders



3131 7qt 11" diameter
List \$75



3132 6qt 10" diameter
List \$60



3133 4qt 8" diameter
List \$45



3134 3qt 7" diameter
List \$40

Silicone Baking Liners



- Non-stick Baking Surface
- Temperature From -40°F/-40°C to 482°F/250°C
- Oven, Freezer and Microwave Safe
- Easy Clean Up with Mild Soap and Water
- Compact Storage - Lay Flat or Roll Up

The non-stick surface of this liner helps baked goods release easily. Also great for kneading dough and candies, baking cookies and croissants. Replaces parchment and wax paper. Reusable for thousands of times.

Full sheet pan is ideal for rolling dough and commercial oven use. Half sheet fits common sheet pans for making cookies and pastry. Jelly liner fits jelly sheet pans for creating the ultimate Jelly Roll cake. Petite jelly is sized for most toaster and small microwave ovens.

NEW 99125 Full Sheet Pan
Actual size 16.5" x 24.5"
List \$40

99126 Half Sheet Pan
Actual size 16.5" x 11.625"
List \$20

99127 Jelly Roll
Actual size 11" x 17"
List \$20

99128 Petite Jelly
Actual size 8.5" x 11.5"
List \$10

MIU Ergonomically Designed Stamped Commercial Cutlery



- | | | | | | | | | |
|--|---|--|--|---|---|--|--|--|
| 94003
8" Fillet
List \$16 | 94000
8" Santoku
List \$24 | 94002
9" Offset bread
List \$20 | 94015
8" Chef knife
List \$20 | 94001
10" Chef knife
List \$24 | 94010
Cooks fork
List \$16 | 94016
10" Steel
List \$28 | 94011
12" Steel
List \$30 | Slicer
94007 12" \$22
94014 10" \$20
94013 8" \$18 |
|--|---|--|--|---|---|--|--|--|



94009
Dough cutter / scraper
List \$12



- | | | | | |
|--|---|--|---|---|
| 94005
3.25" Paring knife
List \$8 | 94006
5" Utility knife
List \$10 | 94004
6" Boning
List \$12 | 94008
Sandwich spreader
List \$8 | 94012
Pie server
List \$12 |
|--|---|--|---|---|

MIU Precision Forged Cutlery



MIU high-performance cutting tools were created to meet and exceed the most exacting culinary standards of the world's great chefs. Each knife is precision forged from a single blank of German made 440 high carbon steel and feature an incredibly sharp, specially-polished cutting edge. These knives have a lighter and distinctive bolster design that is more agile and reduces fatigue. This revolutionary bolster also allows for use of the entire cutting edge, and makes it easy to sharpen the entire blade all the way to the heel. The seamless construction is hygienic, and the Classic style handle is durable.



- | | | | | | | | | | | |
|--------------------------------------|------------------------------------|-------------------------------------|-----------------------------------|-----------------------------------|------------------------------------|-------------------------------------|---|--|----------------------------------|--|
| 94028
Paring
3.5"
List \$14 | 94026
Paring
4"
List \$16 | 94027
Steak
4.5"
List \$16 | 94022
Chefs
6"
List \$26 | 94020
Chefs
8"
List \$30 | 94021
Slicer
8"
List \$28 | 94023
Santoku
7"
List \$26 | 94024
Offset
Bread
8"
List \$28 | 94025
Offset
Slicer
8"
List \$28 | 94032
Fork
7"
List \$20 | 94031
Sharpener
10"
List \$32 |
|--------------------------------------|------------------------------------|-------------------------------------|-----------------------------------|-----------------------------------|------------------------------------|-------------------------------------|---|--|----------------------------------|--|



- | | | | | | | |
|--|---|--|---|--|--|--|
| 94205 - NEW
Icing Spatula
7.5" Stainless
List \$10 | 94207 - NEW
Icing Spatula
9.75" Stainless
List \$12 | 90106
Solid Turner
7.5" Stainless
List \$20 | 90105
Perforated Turner
7.5" Stainless
List \$20 | 90011
Flexible
Slotted Turner
List \$10 | 90013
Flexible
Solid Turner
List \$10 | 94240 - NEW
Brownie Turner
2.25" Stainless
List \$12 |
|--|---|--|---|--|--|--|

Steak Knives



90057
4.5"
Porterhouse
POM Handle
Set of 4
List \$40



90054
4.5"
Pakkawood
Handle
Set of 4
List \$40



90104
4.5"
Jumbo
Forged
Set of 4
List \$40



90056
4.5"
Forged
Steak
Set of 4
List \$60



90012
4.5"
Gourmet
POM Handle
Set of 6
List \$40



90017
4.5"
Gaucha
Stainless
Set of 4
List \$40



90055
4.5"
Food Service
PP Handle
Set of 12
List \$20



90006 French Style
Paring Knife
Beechwood Handle
Set of 5
List \$30

NEW
90008

90008 French Style
Garnishing Set
Beechwood Handle
Corer, Paring, Zester, Baller, Peeler
Set of 5
List \$40



Grab the knife you need the first time. This sleek bar of brushed stainless steel has a powerful magnet that grips blades firmly for safe, convenient, high-visibility storage. Frees up precious counter space. Comes with mounting hardware



3527
15" Magnetic Knife Bar
List \$40

15" Size: 15" x 2"D x 1"H
20" Size: 20" x 2"D x 1"H

90009
20" Magnetic Knife Bar
List \$50



knives not included



NEW
1190
Knife Sharpener
List \$20



90059
Stainless Steel Mezzaluna
w/ concave cutting board
List \$50

90060
Forged Poultry Shears
18/10 SS
List \$60



10008
Black Kitchen Shears
List \$15

10006
Red All Purpose Kitchen Shears
List \$15
(not shown)

10009
Black All Purpose Kitchen Shears
List \$15
(not shown)



94030
17 Slot Knife Block Set
List \$300



This forged cutlery set includes:

- 7" Hollow Edge Santoku
- 8" Hollow Edge Slicer
- 8" Offset Bread
- 8" Offset Deli
- 8" Chefs
- 6" Chefs
- 4.5" Utility
- 3.5" Utility
- 10" Sharpening Steel
- 7" Carving Fork
- 1 Kitchen Shears
- 6 - 4.5" Steak Knives

90035
Beechwood Pastry Board
18" x 24" x 1"
List \$100



17 Slot Knife Block



Beechwood Cherry Maple Walnut

- | | |
|---------------------|-----------|
| 94033W - Walnut | List \$95 |
| 94033M - Maple | List \$90 |
| 94033O - Oak | List \$80 |
| 94033A - Bamboo | List \$75 |
| 94033B - Beechwood | List \$65 |
| 94033C - Cherry | List \$60 |
| 94033R - Rubberwood | List \$50 |

90046
15 Slot Maple
In Drawer Knife Tray
List \$100



90045
11 Slot Maple
In Drawer Knife Tray
List \$70



90044
7 Slot Maple
In Drawer Knife Tray
List \$25



90085
Maple Cutting Board with
Drawer Knife Tray
List \$150



Knives not included



90604
Salt mill
List \$50

90603
Peppermill
List \$50



10000
Peppermill
List \$30

10001
Salt mill
List \$30



90625
Peppermill or Salt mill
List \$35

90600 Dual Pack
Salt and Peppermill
List \$100

Just press the button of this battery-powered mill, and it automatically dispenses peppercorns or sea salt ground to your desired coarseness. A mini light illuminates the area below the mill – handy for twilight grilling and candlelit dinners. The 18/10 brushed finished stainless steel body houses a durable carbon-steel mechanism for pepper and ceramic mechanism for salt; a window displays the mill's contents. Requires six AAA batteries . 8" high. Spices not included.

Electric powered. Just turn upside down and the gravity switch will automatically dispenses peppercorns or sea salt ground. Adjustable from course to fine grind. The composite body houses a durable carbon-steel mechanism for pepper and ceramic mechanism for salt; a window displays the mill's contents. Requires four AAA batteries . 7.25" high. Spices not included.

This masterful MIU patented grinding mechanism is crafted from durable ceramic, it can accommodate either Peppercorn or Sea Salt . These contemporary mills feature clear acrylic cases with 18/10 brushed stainless-steel trim. 7" high. Spices not included.

97001
Sea Salt 10 oz
Glass Jar
List \$16

97002
Peppercorn 5 oz
Glass Jar
List \$16

90605
Blue Spice mill
Ceramic grinder
List \$20

90610
Red Spice mill
Ceramic grinder
List \$20



Spices not included.

WALNUT FINISHED

A beautiful classic exterior design combines with a powerful interior to create an attractive and exacting pepper mill. The secret is the "Sure Lock" hardened steel grinding mechanism that ensures perfect consistency every time with a simple twist. Handcrafted from hardwood with a handsome walnut stain.



90608 Peppermill, 8"
List \$35

90612 Peppermill, 12"
List \$45

90620 Peppermill, 20"
List \$80

90617 Peppermill, 28"
List \$100

90619 Peppermill, 36"
List \$200



Commercial Stainless Steel Mandoline



Stainless steel body
 Adjustable slice thickness with a turn of the side knob
 Safety food holder
 Built in 2mm and 10mm julienne blade and
 Straight slicing blade and crinkle / waffle blade
 Storage Case
 Dishwasher safe

NEW
 90799
 Mandoline
 Professional Series
 List \$150

Composite Commercial Vee Slicer



90757
 Mandoline
 Professional Series
 List \$100



NEW
 90718
 Mandoline
 Composite
 List \$60
 Composite body
 3 thickness inserts
 2 julienne inserts

Composite body with stainless steel glide plate
 Adjustable slice thickness with a lever below
 Safety food holder
 2, 7, 10mm julienne blades
 Straight slicing blade and crinkle / waffle blade
 Blade holder
 Dishwasher safe



90767
 Mandoline
 Professional Series
 List \$150

Stainless steel body
 Adjustable slice thickness with a lever below
 Safety food holder
 2, 5, 7, & 10mm julienne blades
 Straight slicing blade and crinkle / waffle blade
 Blade holder
 Dishwasher safe

NEW
90711
Mandoline
Professional Series
List \$100



Stainless steel body
Convertible V-blade to crinkle cut blade
Serrated blade inserts
Safety food holder
Blade holder
Dishwasher safe

NEW
90713
Mandoline
White V-Slicer
List \$60



90702

Hand Held V-Slicer

90701 White
90702 Red

List \$25



90704

Hand Held Julienne Slicer

90703 White
90704 Lime

List \$25



90048 Meat Thermometer
NSF Certified
List \$15



Oven-proof glass lens allows continued use while cooking. Cooking thermometer reads instant temperature on large 3 inch dial. Temperature range 130 to 190 degrees Fahrenheit (54 to 88 degrees Celsius). Perfect for roasts, the dial suggests temperatures for various meats. Use on foods cooked in oven, grill, and smoker.



90071 Candy Thermometer
Glass Tube
NSF Certified
List \$10



Sliding stainless steel clip attaches to side of any pan 8-inch glass candy thermometer great for stove-top use Non-mercuric, dual-scale column is easy to read Temperature range 75 to 400°F (25 to 200°C) Indicator shows temperature for different candy stages



90049 Thermometer
Deep Fry / Candy
NSF Certified
List \$20



8-inch face measures temperatures from 100 to 400°F Face shows proper candy temperatures, from “thread” to “hard-crack”. Insulated handle’s adjustable clip secures thermometer to pan. Made of stainless steel; 12 inches long overall.



90069 Thermometer, 3” dial
Commercial oven
NSF Certified
List \$15



Easy-to-read 3-inch dial Measures temperatures from 40 to 500°F Professional quality and accuracy Safe temperature zone guide Can be set on base or hung (base rotates for use as secure hanger) 18/10 Stainless steel



90062 Thermometer, 3” dial
Commercial Freezer
NSF Certified
List \$15



Easy-to-read 3-inch dial Measures temperatures from -20 to 70°F Professional quality and accuracy Safe temperature zone guide Can be set on base or hung (base rotates for use as secure hanger) 18/10 Stainless steel



93081 Thermometer / Timer Digital Probe
List \$40

Electronic cooking thermometer with probe for perfectly cooked meats and poultry. Probe remains in food as it cooks; track internal temperature without opening the oven. Heavy-duty plastic; metallic finish; probe is stainless steel. Easy-to-read digital display; custom programming function; 15 preset options for different meats
Measures 4-1/2 by 2-3/4 inches
Comes with a AAA battery



90004 Instant Read Digital Pocket Thermometer
List \$20

Easy-to-read LCD digits in Fahrenheit or Celsius
Probe measures 4-3/4 inches
-58°F (-50°C) to 500°F (260°C)
Stainless steel probe registers temperature in seconds



90077 Instant Read Digital Pocket Thermometer
NSF Certified
List \$30

6.75" long
Instant Read
Large LCD Display
Range -40°F to +450°F



90039 Instant Read Analog Pocket Thermometer
NSF Certified
List \$10

5-inch stainless-steel stem
1-inch dial instantly displays temperatures from 0 to 220°F
Dial is protected by a shatterproof plastic lens
Thermometer can be recalibrated
Pocket case included



90070 Instant Read Analog Milk frothing Thermometer
NSF Certified
List \$10

1 3/4" dial face
Extra large retaining clip for attaching
Ranges from 0-220°F
6" stem
Clear and accurate temperature readings





90064
French Fry Cutter
Stainless Steel
List \$80



3414
Stainless Steel
Flour Sifter
List \$55



376
Mandoline with
4 Attachments
List \$15



636
Garlic Slicer
Stainless Steel
List \$5



90003
Vegetable Julienne
Spiral Slicer



90001
Food Chopper
Stainless Steel
List \$40



90002
Food Chopper
Plastic
List \$20



91489
10" Whisk
Stainless Steel
List \$15

91490
12" Whisk
Stainless Steel
List \$15

Graters



3368
Grater
Stainless Steel
List \$35



3261
Grater
Stainless Steel
List \$40



3566
Flat Mandoline
w/ 4 attachments
Stainless Steel
List \$50



552
Grater
List \$25



3595
Cheese Slicer
Stainless Steel
List \$45



3008
Grater
Stainless Steel
List \$20



3564
Stainless Steel
Mozzarella Cheese Slicer
List \$35



3792
Stainless Steel
Egg Cutter & Piecer
List \$45



481
Egg Cutter & Piecer
List \$10



3427
Stainless Steel
Soup Ladle Stand
List \$20



3599
Stainless Steel
Butter Warmers
Set of 4
List \$60



3255
Stainless Steel
Egg Wedge
List \$30



3006
Egg Cup
Stainless Steel
List \$6



**Stainless Steel
Mesh Strainers**

3047
8" Diameter
List \$30

3049
6" Diameter
List \$22

3048
7" Diameter
List 25

3050
5.5" Diameter
List \$20

Presses



90063
Stainless Steel
Garlic Press
List \$20



90072
SS Garlic Press
With 2 Gauge Head
List \$20



90016
SS Jumbo
Garlic Press
List \$20



3078A
SS Potato Ricer
with 2 Disks
List \$70



3556
Stainless Steel
Potato Press
List \$60



10004
Stainless Steel
Citrus Squeezer
List \$40



3620
SS 2 qt Food Mill
with 3 Gauge Disks
List \$100



3560
SS 0.5 qt Food Mill
List \$50



3790
Stainless Steel
Potato Press
List \$20



NEW
3888
Stainless Steel
22 Pc Decorator Set
List \$70

Set includes

- 13 Cookie Disks
- 8 Icing Nozzles
- 1 Dough/Icing Dispenser
- 1 Storage Case

This deluxe kit sets the standard for decorating. The stainless steel disks and nozzles will stand up to years of use. Varies patterns offer a style for any occasion. The ratchet dispensing gun loads and dispense easily with its large trigger. Takes apart for fast cleanup.



3541
Stainless Steel
Cherry Stoner
List \$10

NEW
3745
Puree Sieve
List \$70



3768
Stainless Steel
Basting Set
List \$20



NEW
3622
SS 3 qt
Fine Mesh Strainer
List \$100



Salad Spinners



3189
Stainless Steel Crank Handle
Salad Spinner w/ storage cover
List \$100



590
Pull String Drain Through
Salad Spinner
List \$31



487
Pull String Salad Spinner
List \$25



1009
2 Piece Mixing / Measuring Jugs
1.5 and 2.5 quarts
List \$20

These handy jugs are great for everyday use. With the center removable plug taken out, you can add ingredients into the jug and mix. Place the center plug back in for storage or keeping the ingredients from spilling.

Measuring



3895
Stainless Steel
8 lb Kitchen Scale
List \$100



202
Stainless Steel
11 lb Digital Kitchen Scale
List \$85



3728
Stainless Steel
5 lb Kitchen Scale
List \$60



3331
Salad Dressing Shaker
SS Stopper w/seal
List \$13



598
2 lb Kitchen Scale
List \$20



586
5 lb Kitchen Scale
List \$25



3592
Stainless Steel
7 lb Kitchen Scale
List \$75



3573
Stainless Steel
6 lb Kitchen Scale
List \$80

Heavy duty stainless steel measuring cups lives up to the demand of a commercial kitchen yet elegant for the home. Measurements are stamped onto the long handles. The cups nest for space saving storage. Polished exterior, brushed interior. Dishwasher safe.



91688
Set of 7 Measuring Cups
1/8, 1/4, 1/3, 1/2, 2/3, 3/4, & 1 cup
List \$50

91686
Set of 5 Measuring Cups
1/8, 1/4, 1/3, 1/2, & 1 cup
List \$30

91687
Set of 3 Measuring Cups
2/3, 3/4, & 2 cup
List \$30



92025
Set of 4 Measuring Cups
1/4, 1/3, 1/2, & 1 cup
List \$20



Stainless Steel Portion Scoop
91634 - Size #10
91633 - Size #12
91629 - Size #24
91628 - Size #30
91627 - Size #40
91625 - Size #60

List \$20

91689
Set of 5 Measuring Spoons
1/8, 1/4, 1/2, 1 tsp & 1 tbsp
List \$30



91690
Set of 5 Measuring Spoons
Smidgen, Pinch, 2 tsp, 1-1/2
tbsp & 2 tbsp
List \$35



931
Plastic Measuring Cups/Spoons
w/ egg separator - Set of 13
List \$20

92026
Set of 4 Measuring Spoons
1/4, 1/2, 1 tsp & 1 tbsp
List \$6





90098
Aluminum Lemon Squeezer
List \$20

90097
Aluminum Lime Squeezer
List \$20

3210
Stainless Steel 24 oz
Dimpled Cocktail Shaker
List \$48

3145
Stainless Steel 18oz
List \$36

3244
Stainless Steel 8oz
List \$24



3650
Stainless Steel
Measuring Beaker w/ lid
List \$38



11334
Stainless Steel
Cocktail Whisk
List \$13



480
Plastic 20oz
Cocktail Shaker
List \$5



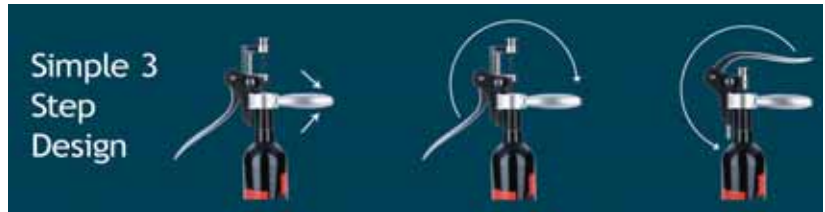
123
Stainless Steel
7 pc Bar Set
List \$100

3832
Stainless Steel 10"
Mojito Muddler
List \$18





90050
Zinc Alloy
Connoisseur Corkscrew Set
with foil cutter and stand
List \$35



Easy to use, only 3 steps. This connoisseur corkscrew has a cam lever design that makes even the most stubborn cork come out. Comes with a foil cutter, extra screw, and an elegant holder to display the unit.



3702A
Stainless Steel Dimpled
Red Wine Glass
List \$24



3703A
Stainless Steel Dimpled
Martini Glass
List \$22



3417D
Stainless Steel Dimpled
Water Pitcher 2.5 qts
List \$70



3193
Stainless Steel
Wine Cooler
List \$60



3231
Stainless Steel Dimpled
Champagne Cooler
List \$80



3077
Stainless Steel Dimpled
Wine Cooler - Double Wall
List \$80



3425
Stainless Steel
Ice Bucket - Double Wall
List \$120

Perfect size plastic bar board with non slip edges for slicing lemon, lime and other related items. It measure 8.25" x 5.5" x 0.5". Come in Cherry, Orange, Lemon and Lime colors. List \$10

11854 - Cherry 11852 - Orange 11851 - Lemon 11853 - Lime



Bamboo Bar Board



90028
6"x15"x0.75"
List \$20



90027
5.5"x8"x0.75"
List \$10

90029
12"x15"x0.75"
List \$40





3700
Stainless Steel
Coffee Pot - 1.5 qt
List \$90



3699
Stainless Steel
Tea Pot - 1.5 qt
List \$100



3775
Stainless Steel
Tea Kettle - 1 qt
List \$130



3458
Stainless Steel
Thermo Carafe - 28 oz
List \$100



3340
Stainless Steel
Milk Warmer - 20oz
List \$25



3722
Stainless Steel
Italian Style Oil Can - 1 qt
List \$60



3332
Stainless Steel
Butter Dish
List \$25



3766
Stainless Steel
Pancake Dispenser
List \$40



3436
Stainless Steel
Spice Shaker
List \$20



3061
Stainless Steel
16oz Oil Can
List \$34



90102
Stainless Steel 2lb
Meat Pounder / Tenderizer
List \$40



3600
Stainless Steel 2lb
Meat Pounder
List \$60



93263
Stainless Steel
Meat Tenderizer
List \$40



93262
Stainless Steel
Herb Mincer
List \$40



3605
Stainless Steel
Meat Holder
List \$20



NEW
90019
Stainless Steel
BBQ Tong 16"
List \$15



1124
Silicone Basting Brush
Heat Resistant Handle
List \$13



3604
Stainless Steel
Tomato Holder
List \$13



3413
Stainless Steel
Chopstick Tongs
List \$12



99001
Silicone Basting Brush
Stainless Steel Handle
List \$10



These silicone cupcake liners comes in both standard and mini size. The flexible silicone makes for an easy release. The mini size is perfect for making bite size candies. Highly heat resistant and dishwasher safe. Reuse over and over again.

90094
Standard Size
Set of 12
List \$15

90095
Mini Size
Set of 24
List \$20



90043
Silicone Spatula
Set of 4
List \$15



**Silicone Spatula
w/ Heat Resistant
Handles**

99103 **99123**
12" Blue 9.5" Blue
List \$8 List \$5

99104 **99124**
12" Red 9.5" Red
List \$8 List \$5



**Composite Cooking Spoons
Set of 2**

10010 **10011**
Red Blue
List \$12 List \$12



**Silicone Spatula
w/ Stainless Steel
Handles - Set of 2**

9407
Blue
List \$25

4486
Red
List \$25



**Nylon Flexible Pancake Turners
Set of 2**

11377 **11376**
Blue Red
List \$25 List \$25

**Nylon Flexible Turners
Set of 2**

11379 **11378**
Red Blue
List \$25 List \$25



Highly heat resistant - up to 500°F. These silicone bake dish holder fits naturally in you hand. Just slip your fingers into the holder and grip any dish or pan with ease. Dishwasher safe. Choose from either Blue or Red. Sold individually.



99007
Silicone Bake Dish Holder
Blue
List \$10

99008
Silicone Bake Dish Holder
Red
List \$10



Silicone Pot Holders - 6.75" x 6.75"
High heat resistant - Dishwasher safe

99094
Set of 2 - Red
List \$20

99093
Set of 2 - Green
List \$20

99092
Set of 2 - Blue
List \$20

99095
Set of 2 - Yellow
List \$20

99005
Silicone Pot Handle Holder
Blue
List \$12

99006
Silicone Pot Handle Holder
Red
List \$12

99003
Silicone Bowl Scraper
Blue
List \$15

99004
Silicone Bowl Scraper
Red
List \$15



90005
Flexible Cutting Boards
11" x 17" - Set of 5
List \$15

91600
Can-Do Can Opener
No Sharp Edge Design
List \$20





Nothing beats a glass of fresh squeeze orange juice. Now you can create that easily at home with this heavy duty stainless steel juicer. Place your sliced orange on to the holder and just pull down the lever. The juice will flow down to the holding cup.

90068
Stainless Steel Juicer
List \$200

3386
Stainless Steel
Mini Citrus Trumpet
Set of 2
List \$20



10004
Stainless Steel
Citrus Squeezer
List \$40



3385
Stainless Steel
Citrus Juice Reamer w/ 3 Domes
List \$50



764
Composite
Apple Cutter & Corer
List \$12



90090
Zinc Alloy
Apple Cutter & Corer
List \$20



3249
Apple Cutter & Corer
French Fry Cutter
List \$48



3481
Stainless Steel
Mix Bowls w/ lids
Set of 3 - RED
List \$150

3480
Stainless Steel
Mix Bowls w/ lids
Set of 3 - BLUE
List \$150

3704
Stainless Steel
Lazy Susan
Non-Slip Surface
List \$40



3528
Stainless Steel
Cutlery Tray
List \$80



3602
Stainless Steel
Sponge Holder
List \$13



3837
Stainless Steel
Breading Tray
8.5" x 5.5" x 1"
List \$20



3594
Stainless Steel
Napkin Holder
List \$60

3085
Stainless Steel
Funnel with strainer
List \$13





NEW - Special Order Only
3142
12 Jar Spinning
Magnetic Spice Rack

List \$165



NEW - Special Order Only
3141
9 Jar Spinning
Magnetic Spice Rack

List \$130



90630
48 Jars Spinning
Beechwood Spice Rack
16.5" x 12" x 12"

List \$200

Spice can be viewed through the glass lid making identification easy. By twisting the lid, you can choose between a sprinkle or a lot of spices. Magnetic base keeps the jars in place saving counter top space. Choose from either a 12 or 9 jar set. 11.5" high.



11707
SS Handle
Angle Turner

List \$8



11709
SS Handle
Wok Turner

List \$8



11711
SS Handle
Slotted Turner

List \$8



11703
SS Handle
Soup Ladle

List \$8



11702
SS Handle
Spoon

List \$8



11701
SS Handle
Skimmer

List \$8

Stainless Steel Tools



10902
Cooking Spoon
18/10 SS
List \$20



10906
Perforated Spoon
18/10 SS
List \$20



10907
Deep Soup Ladle
18/10 SS
List \$20



10909
Mesh Skimmer
18/10 SS
List \$20



10903
Soup Ladle
18/10 SS
List \$20



10901
Soup Skimmer
18/10 SS
List \$20



10910
Fish Turner
18/10 SS
List \$20



10904
Slotted Turner
18/10 SS
List \$20



10905
Pasta Fork
18/10 SS
List \$20



3137
Tool Bar w/hooks
Stainless, 15"

List \$25



11201
Small Pastry Cutter
List \$12



11203
Large Pastry Cutter
List \$16



11202
Cocktail Whisk
List \$12



11205
Pizza Cutter
List \$16



11204
Grapefruit Knife
List \$12



11206
Cheese Planer
List \$13



11209
Apple Corer
List \$11



11211
Melon Baller
List \$12



11213
Ice Cream Scoop
List \$13



11219
Can Opener
List \$24



11236
Lemon Zester
List \$10



11207
Spring Whisk
List \$16



11220
Garlic Press
List \$20



11224
Vegetable Peeler
List \$12



11237
Bottle Opener
List \$10



11239
Oyster Shucker
List \$10



11222
Tomato Slicer
List \$12



11229
Cake Icing Spatula
List \$12



11231
Cake / Pie Server
List \$11



11221
Jar Opener
List \$22



11235
Cheese Knife
List \$12



11240
Handheld Mandoline
List \$16

Bamboo Boards

Our bamboo boards are beautiful, functional, and ecologically sensitive. Bamboo is 17% harder than maple, making it an excellent cutting surface. Our boards are assembled with approved food grade glue. No dyes or stains are used in the manufacturing process. The pleasing designs are created by using the naturally occurring variations within the grain. Bamboo is a harvested grass that can grow as much as 2 feet per day. It does not require replanting, it throws off new shoots naturally, making it one of the most renewable resources known.



90030
Cutting Board
6.5" square x 1.5" thick
List \$15



90065
Cutting Board
11" square x 1.5" thick
List \$50

90066
Cutting Board
14" x 20" x 1.5"
List \$100



90032
Bamboo Chopping Block
12" Round x 2.5" thick
List \$80

90033
15" Round x 2.5" thick
List \$140

90073
Bamboo Oval Serving Board
20" x 12" x 2"
List \$200



90031
Bamboo Butcher Block
24" x 18" x 2.5"
List \$300



Straight

For hard fruits and vegetables like apples and potatoes



90126
Straight Peeler
List \$7.50

Julienne

For creating julienne strands with carrots and other fruits and vegetables.



90127
Julienne Peeler
List \$7.50

Serrated

For soft skin fruits and vegetables like tomatoes and eggplant



90128
Serrated Peeler
List \$7.50



90130
Straight Peeler
List \$12.50



90131
Julienne Peeler
List \$12.50



90132
Serrated Peeler
List \$12.50



90136
Jumbo Peeler
List \$20



90135
Dual Head Peeler
Straight and Julienne
List \$20



90710
Double Sided
Ceramic Blade Slicer
List \$20



90140
Ceramic Peeler
List \$5



90141
Ceramic
Citrus Peeler
List \$5



94061
Ceramic
Kitchen Shears
List \$50

**CORPORATE HEADQUARTER,
AND DISTRIBUTION CENTER**

13430 NE 16TH STREET
BELLEVUE, WASHINGTON 98005
TEL: 206-605-0555
FAX: 206-971-5060
EMAIL: ADMIN@MIUFRANCE.COM



US SALES OFFICE

TEL: 206-605-0555
FAX: 206-971-5060
EMAIL: USA@MIUFRANCE.COM

HONG KONG SALES OFFICE

ROOM 702, 7/F CFC-CATIC BLDG
NO 44 TSU YIP STREET
KWUN TONG, KOWLOON, HONG KONG
EMAIL: HK@MIUFRANCE.COM

CHINA SALES OFFICE

NO. 6 MEIWEI WESTERN ROAD
XIAOLAN INDUSTRIAL PARK
XIANLAN TOWN, ZHONGSHAN CITY
GUANGDONG PROVINCE, CHINA
EMAIL: CHINA@MIUFRANCE.COM

ITALY SALES OFFICE

EMAIL: ITALY@MIUFRANCE.COM